



IMBUED GENERAL TRADING LLC

Bringing you the best. . .



OVERVIEW:



Imbued General Trading LLC, Dubai was established in the year 1996 as The Dutch Arab Trading Company, initially specializing in supplying premium candles to the hospitality sector across the UAE and the broader Middle East. Gaining a strong reputation for quality and attention to client needs, the company became a trusted partner for hotels, restaurants, and event planners.

In 2012, the business evolved into IMBIMA FZC under a general partnership, expanding its offerings to serve a wider range of customer demands. By January 1, 2017, it transitioned to Imbued General Trading LLC, a limited liability company. With this new structure, Imbued broadened its product line to provide a full suite of hospitality supplies, including candles, bio-degradable packaging, janitorial products, and décor, all while upholding a steadfast commitment to quality and innovation.

Today, Imbued General Trading LLC is dedicated to delivering tailored, high-quality solutions to the hospitality industry, addressing the unique and ever-evolving needs of its clients across the region with a customer-centric approach.



OUR BRANDS



CANDLES



PACK



SAFETY



WEAR





Imbued Candles



Our candles at Imbued are designed to elevate any ambiance, crafted with a commitment to quality and sustainability. Available in a range of shapes, sizes, and subtle fragrances, they're perfect for setting the mood in any setting—whether it's a cozy dining room, a luxurious spa, or a high-end hotel lobby. Made from premium materials, including soy, beeswax, and other eco-conscious options, each candle provides a clean, long-lasting burn. Our selection includes elegant pillars, delicate votives, classic tea lights, and tapered designs, catering to diverse needs while adding warmth and refinement to your space

CANDLES



PILLAR CANDLES



| CODE | SIZE | COLOR | PACKAGING |
|-----------|---------|---------------|------------|
| FP3X3 | 3X3 | WHITE / IVORY | 1 X 48 |
| FP3X6 | 3X6 | WHITE / IVORY | 1 X 24 |
| FP3X9 | 3X9 | WHITE / IVORY | 1 X 12 |
| FP3X12 | 3X12 | WHITE / IVORY | 1 X 8 |
| FP4X4 | 4X4 | WHITE / IVORY | 1 X 16 |
| FP4X6 | 4X6 | IVORY | 1 X 12 |
| FP4X8 | 4X8 | WHITE / IVORY | 1 X 8 |
| FP4X12 | 4X12 | WHITE / IVORY | 1 X 6 |
| FP6X9 | 6X9 | IVORY | 1 X 4 |
| FP1.6X2 | 1.6X2 | IVORY | 1 X 36 X 6 |
| FP2.4X2.8 | 2.4X2.8 | WHITE / IVORY | 1 X 72 |
| FP2.4X4.8 | 2.4X4.8 | WHITE / IVORY | 1 X 48 |

FLOATING CANDLES



| CODE | SIZE | COLOR | PACKING |
|-------|--------|---------------------------------|---------|
| FL030 | 30 GMS | WHITE / IVORY / RED GREEN | 1X24X20 |
| FL084 | 84 GMS | IVORY / RED | 1X72X2 |

TAPERED CANDLES



| CODE | SIZE | COLOR | PACKING |
|--------|------|-------------------------------------------------------|---------|
| FT1053 | 10 " | IVORY / WHITE RED / GREEN BLUE / SILVER GOLD | 1X24X12 |



TEA LIGHT CANDLES



| CODE | TYPE | PACKING |
|-------|-----------|----------|
| FW011 | 3.5 HOURS | 1X10X100 |
| FW013 | 4.5 HOURS | 1X10X100 |
| FW023 | 8.5 HOURS | 1X10X50 |
| FW043 | 12 HOURS | 1X24X15 |

BIRTHDAY CANDLES



| TYPE | PACKING |
|-------------|---------|
| MULTI-COLOR | 1X24 |
| SILVER | 1X24 |
| GOLD | 1X24 |
| RED | 1X24 |

CITRONELLA CANDLES



| TYPE | PACKING |
|-----------------------------------------------|---------|
| FC02494 YELLOW 50 HOURS BURNING TIME | 1X6 |

CUSTOMIZED CANDLES

We offer a wide range of customized candles, including scented, colored, uniquely shaped, and glass-encased designs.





IMBUED PACK

BIO-DEGRADABLE PRODUCTS



BIO - BAGASSE PRODUCTS

Biodegradable sugarcane bagasse products are eco-friendly alternatives to conventional plastic disposables, made from the fibrous residue left after extracting juice from sugarcane. These products are 100% compostable, breaking down naturally without releasing harmful toxins, making them ideal for environmentally conscious consumers. Sugarcane bagasse products are highly durable, heat-resistant, and grease-proof, suitable for both hot and cold items, and available in various forms, including plates, bowls, trays, and containers. They offer an affordable, sustainable solution that reduces plastic waste while maintaining functionality and quality for food packaging and serving.

ROUND BAGASSE PLATE



| SIZE | PACKAGING |
|-----------------|-----------|
| 6" (15 CM) | 8*125 PCS |
| 7" (18 CM) | 8*125 PCS |
| 9" (23 CM) | 4*125 PCS |
| 12" (28.5 CM) | 10*50 PCS |

ROUND BAGASSE PLATE Compartments



| TYPE | PACKAGING |
|-------------------|-----------|
| 9" 3-COMPARTMENT | 4*125 PCS |
| 10" 3-COMPARTMENT | 4*125 PCS |
| 11" 4-COMPARTMENT | 10*50 PCS |
| 12" 4-COMPARTMENT | 10*50 PCS |
| 12" 7-COMPARTMENT | 4*50 PCS |



RECTANGULAR BAGASSE TRAY

Compartments



| TYPE | PACKAGING |
|----------------------------|-----------|
| 4 COMP: MEAL TRAY XL | 10*50 PCS |
| 5 COMP: MEAL TRAY WITH LID | 10*50 PCS |
| 5 COMP: MEAL TRAY | 8*50 PCS |

SQUARE BAGASSE TRAY



| TYPE | PACKAGING |
|-------------------------|-----------|
| 1 D TRAY 5.5"*5.5" | 45*50 PCS |
| 4" SQUARE TRAY | 40*50 PCS |
| 7" SQUARE TRAY | 8*125 PCS |
| 9" SQUARE TRAY | 4*125 PCS |
| 10" SQUARE 3 COMP: TRAY | 4*125 PCS |



RECTANGULAR BAGASSE TRAY



| TYPE | PACKAGING |
|------------------------|-----------|
| 2D TRAY 8.5"*5.5" | 30*50 PCS |
| 500ML RECTANGULAR TRAY | 32*50 PCS |
| CHIPS TRAY 7"*5" | 4*125 PCS |
| 2 COMPARTMENTS TRAY | 20*50 PCS |

BAGASSE FOOD BOXES



| TYPE | PACKAGING |
|------------------------|-----------|
| 5 OZ 150ML SQUARE | 20*50 PCS |
| 650 ML RECTANGULAR BOX | 4*50 PCS |
| 750 ML RECTANGULAR BOX | 4*125 PCS |
| 8"*6" RECTANGULAR BOX | 6*50 PCS |



TAKEAWAY BAGASSE CLAMSHELL



TYPE

PACKAGING

9"*6" - 900 ML

4*50 PCS

9"*6" 2 COMP:-850ML

4*50 PCS

9"*9" 3 COMP:-1300ML

2*100 PCS

9"*9" - 1500 ML

2*100 PCS

BIO DEGRADABLE CUTLERY



TYPE

PACKAGING

BAGASSE SPOON

2*50 PCS

BAGASSE FORK

2*50 PCS

BAGASSE KNIFE

2*50 PCS



BIO - BAGASSE BOWLS



| TYPE | PACKAGING |
|-------------------------|-----------|
| 4 oz 100 ML ROUND BOWL | 20*50 PCS |
| 6 oz 180 ML ROUND BOWL | 20*50 PCS |
| 8 oz 240 ML ROUND BOWL | 20*50 PCS |
| 12 oz 350 ML ROUND BOWL | 20*50 PCS |
| 16 oz 500 ML ROUND BOWL | 20*50 PCS |
| 12 oz 300 ML ROUND TALL | 20*50 PCS |
| 16 oz 500 ML ROUND TALL | 20*50 PCS |



PAPER PRODUCTS



Eco-conscious, practical, and versatile – Imbued’s range of paper disposables is thoughtfully designed to serve modern hospitality needs without compromising on environmental values. Crafted from responsibly sourced, biodegradable materials, our paper plates, cups, napkins, and takeout containers deliver high durability and quality. Each item combines functionality with a refined aesthetic, enhancing the presentation of food while being easy to dispose of responsibly. Ideal for both casual and formal settings, our paper disposables are suitable for everything from quick-service cafes to high-end catering events, seamlessly blending into various dining environments. With a commitment to sustainability, Imbued’s disposable paper products offer a guilt-free, convenient solution that reduces waste and supports eco-friendly practices. Perfect for clients who prioritize quality and environmental stewardship.



PAPER CUPS



| TYPE | PACKAGING |
|--------------------------|---------------|
| SINGLE WALLED CUP 2.5 OZ | 2000PCS / CTN |
| SINGLE WALLED CUP 4 OZ | 2000PCS / CTN |
| SINGLE WALLED CUP 6 OZ | 1000PCS / CTN |
| SINGLE WALLED CUP 6.5 OZ | 1000PCS / CTN |
| SINGLE WALLED CUP 8 OZ | 1000PCS / CTN |
| SINGLE WALLED CUP 12 OZ | 1000PCS / CTN |
| SINGLE WALLED CUP 16 OZ | 1000PCS / CTN |

AVAILABLE COLORS : WHITE / BROWN / MULTI-COLOR



| TYPE | PACKAGING |
|-------------------------|---------------|
| DOUBLE WALLED CUP 4 OZ | 1000PCS / CTN |
| DOUBLE WALLED CUP 8 OZ | 1000PCS / CTN |
| DOUBLE WALLED CUP 12 OZ | 500PCS / CTN |
| DOUBLE WALLED CUP 16 OZ | 500PCS / CTN |

AVAILABLE COLORS : WHITE / BROWN / BLACK / MULTI-COLOR



RIPPLE PAPER CUPS



| TYPE | PACKAGING |
|--------------------|-------------------------------|
| 4 oz RIPPLE CUP | 1000PCS / CTN |
| 8 oz RIPPLE CUP | 500PCS / CTN |
| 12 oz RIPPLE CUP | 500PCS / CTN |
| 16 oz RIPPLE CUP | 500PCS / CTN |
| AVAILABLE COLORS : | WHITE / BROWN / BLACK / MULTI |

PAPER CUP LIDS (Plastic)



| TYPE | PACKAGING |
|--------------------|---------------|
| 4 oz PLASTIC LID | 1000PCS / CTN |
| 8 oz PLASTIC LID | 1000PCS / CTN |
| 12 oz PLASTIC LID | 1000PCS / CTN |
| 16 oz PLASTIC LID | 1000PCS / CTN |
| AVAILABLE COLORS : | WHITE / BLACK |



PAPER CUP HOLDERS



| TYPE | PACKAGING |
|------------------------------|-----------|
| CUP HOLDER-2 CUPS | |
| CUP HOLDER-4 CUPS | |
| CORRUGATED CUP HOLDER-2 CUPS | |
| CORRUGATED CUP HOLDER-4 CUPS | |

PAPER CUP SLEEVES



| TYPE | PACKAGING |
|-------------|-----------|
| 8 OZ SLEEVE | 100*10 |

ICE CREAM CUPS



| TYPE | PACKAGING |
|---------------------|-----------|
| 3 OZ ICE CREAM CUP | 100 PCS |
| 4 OZ ICE CREAM CUP | 100 PCS |
| 5 OZ ICE CREAM CUP | 100 PCS |
| 6 OZ ICE CREAM CUP | 100 PCS |
| 8 OZ ICE CREAM CUP | 100 PCS |
| 12 OZ ICE CREAM CUP | 100 PCS |
| 14 OZ ICE CREAM CUP | 100 PCS |
| 16 OZ ICE CREAM CUP | 100 PCS |



KRAFT PAPER PRODUCTS

KRAFT SOUP BOWLS



| TYPE | PACKAGING |
|-----------------------|-----------|
| 8 OZ KRAFT SOUP BOWL | 500 PCS |
| 12 OZ KRAFT SOUP BOWL | 500 PCS |
| 16 OZ KRAFT SOUP BOWL | 500 PCS |
| 26 OZ KRAFT SOUP BOWL | 500 PCS |
| 32 OZ KRAFT SOUP BOWL | 500 PCS |

KRAFT SOUP BOWL LIDS



| TYPE | PACKAGING |
|----------------------|-----------|
| PAPER LID 8/12/16 OZ | 500 PCS |
| PAPER LID 26/32 OZ | 500 PCS |
| PP LID 8/12/16 OZ | 500 PCS |
| PAPER LID 26/32 OZ | 500 PCS |



KRAFT ROUND SALAD BOWLS



| TYPE | PACKAGING |
|------------------------------------------------|-----------|
| 500 ML ROUND SALAD BOWL | 300 PCS |
| 750 ML ROUND SALAD BOWL | 300 PCS |
| 1000 ML ROUND SALAD BOWL | 300 PCS |
| 1100 ML ROUND SALAD BOWL | 300 PCS |
| 1300 ML ROUND SALAD BOWL | 300 PCS |
| PP LID 500ML, 750ML, 1000ML, 1100ML, 1300ML | 300 PCS |

KRAFT RECTANGULAR BOWLS



| TYPE | PACKAGING |
|------------------------------------------|-----------|
| 500 ML RECTANGULAR BOWL | 300 PCS |
| 650 ML RECTANGULAR BOWL | 300 PCS |
| 750 ML RECTANGULAR BOWL | 300 PCS |
| 1000 ML RECTANGULAR BOWL | 300 PCS |
| KRAFT LID 500ML, 650ML, 750ML, 1000ML | 300 PCS |
| PET LID 500ML, 650ML, 750ML, 1000ML | 300 PCS |



KRAFT SQUARE BOWLS



| TYPE | PACKAGING |
|--------------------------------------------|-----------|
| 750 ML SQUARE BOWL | 150 PCS |
| 1000 ML SQUARE BOWL | 150 PCS |
| 1200 ML SQUARE BOWL | 150 PCS |
| 1400 ML SQUARE BOWL | 150 PCS |
| PET LID 750ML, 1000ML, 1200 ML, 1400 ML | 150 PCS |

KRAFT LUNCH BOX



| TYPE | PACKAGING |
|-------------------------|-----------|
| LUNCH BOX 120 - XXSMALL | 200 PCS |
| LUNCH BOX 140 - XSMALL | 200 PCS |
| LUNCH BOX 150 - SMALL | 200 PCS |
| LUNCH BOX 180 - MEDIUM | 200 PCS |
| LUNCH BOX 195 - LARGE | 200 PCS |

KRAFT LUNCH BOX WITH WINDOW



| TYPE | PACKAGING |
|-------------------------|-----------|
| LUNCH BOX 120 - XXSMALL | 200 PCS |
| LUNCH BOX 140 - XSMALL | 200 PCS |
| LUNCH BOX 150 - SMALL | 200 PCS |
| LUNCH BOX 180 - MEDIUM | 200 PCS |
| LUNCH BOX 195 - LARGE | 200 PCS |

KRAFT PAPER BOAT TRAY



| TYPE | PACKAGING |
|--------------------------|-----------|
| PAPER BOAT TRAY - SMALL | 500 PCS |
| PAPER BOAT TRAY - MEDIUM | 500 PCS |
| PAPER BOAT TRAY - LARGE | 500 PCS |



KRAFT NOODLE BOX



| TYPE | PACKAGING |
|-----------------------|-----------|
| KRAFT NOODLE BOX 80Z | 500 PCS |
| KRAFT NOODLE BOX 160Z | 500 PCS |
| KRAFT NOODLE BOX 260Z | 500 PCS |
| KRAFT NOODLE BOX 320Z | 500 PCS |

KRAFT SANDWICH WEDGES



| TYPE | PACKAGING |
|-----------------------|-----------|
| SANDWICH WEDGE-SINGLE | 250 PCS |
| SANDWICH WEDGE-DOUBLE | 250 PCS |

KRAFT FLUTE BURGER BOX



| TYPE | PACKAGING |
|--------|-----------|
| SINGLE | 250 PCS |
| DOUBLE | 250 PCS |



PAPER BAGS

PAPER BAGS-TWIST HANDLE



TYPE

PACKAGING

SMALL - 28*18*29 250 PCS

MEDIUM-33*16*28 250 PCS

LARGE-33*18*34 250 PCS

X-LARGE-33*18*34 250 PCS

AVAILABLE COLORS : WHITE / BROWN

PAPER BAGS- DIE CUT HANDLE



TYPE

PACKAGING

SMALL - 24*12*31 250 PCS

MEDIUM - 29*15*29 250 PCS

LARGE - 32*16*33 250 PCS

X-LARGE - 38*14*40 250 PCS

AVAILABLE COLORS : WHITE / BROWN

PAPER BAGS- SQUARE BOTTOM



TYPE

PACKAGING

10.5*6.5*27.5 250 PCS

12*7*24 250 PCS

15*5*33 250 PCS

18*11*32 250 PCS

AVAILABLE COLORS : WHITE / BROWN



PAPER BAGS- FLAT BOTTOM



| TYPE | PACKAGING |
|------------------|-----------|
| NO. 0 -8*5*25 | 1000 PCS |
| NO.1 -12*5.5*30 | 500 PCS |
| NO. 2 -14*7.5*33 | 500 PCS |
| NO. 3 -20*10*41 | 250 PCS |
| NO. 4 -26*10*51 | 150 PCS |
| NO. 5 -30*9*56 | 150 PCS |
| NO. 6 -32*10*59 | 150 PCS |

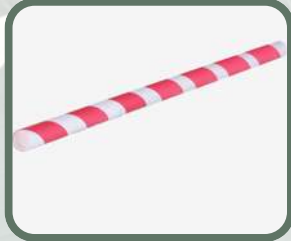
AVAILABLE COLORS : WHITE / BROWN

PAPER POPCORN TUB



| TYPE | PACKAGING |
|------------------|-----------|
| POPCORN TUB 24OZ | 200 PCS |
| POPCORN TUB 32OZ | 200 PCS |
| POPCORN TUB 46OZ | 200 PCS |
| POPCORN TUB 64OZ | 200 PCS |
| POPCORN TUB 85OZ | 200 PCS |

PAPER STRAWS



| TYPE | PACKAGING |
|--------------------------|-----------|
| PAPER STRAW NARROW 6MM | 500 PCS |
| PAPER STRAW MEDIUM 8MM | 500 PCS |
| PAPER STRAW LARGE 10MM | 500 PCS |
| PAPER STRAW X-LARGE 12MM | 500 PCS |

PAPER PLATE



| TYPE | PACKAGING |
|--------------------|-----------|
| PAPER PLATE 7 INCH | 1200 PCS |
| PAPER PLATE 9 INCH | 1200 PCS |

PAPER CAKE BOX



| TYPE | PACKAGING |
|-------------------|-----------|
| CAKE BOX 15*16*8 | 100 PCS |
| CAKE BOX 20*20*10 | 100 PCS |
| CAKE BOX 25*25*12 | 100 PCS |
| CAKE BOX 30*30*12 | 100 PCS |
| CAKE BOX 35*35*12 | 100 PCS |



BAKING PAPER



| TYPE | PACKAGING |
|------|-----------|
|------|-----------|

| | |
|--------------------|--------|
| BAKING SHEET-SMALL | 30 PCS |
|--------------------|--------|

| | |
|---------------------|--------|
| BAKING SHEET-MEDIUM | 30 PCS |
|---------------------|--------|

| | |
|-------------------|---------|
| BAKING ROLL-30 CM | 6 ROLLS |
|-------------------|---------|

| | |
|-------------------|---------|
| BAKING ROLL-45 CM | 6 ROLLS |
|-------------------|---------|

AVAILABLE COLORS - WHITE /
BROWN

SANDWICH PAPER



| TYPE | PACKAGING |
|------|-----------|
|------|-----------|

| | |
|----------------------|-----------|
| SANDWICH PAPER-25*35 | 12*800PCS |
|----------------------|-----------|

| | |
|----------------------|-----------|
| SANDWICH PAPER-30*40 | 12*800PCS |
|----------------------|-----------|



TISSUE PRODUCTS



Imbued offers a premium selection of tissue products designed for both the hospitality industry and discerning clients seeking quality essentials. Our tissues are crafted to provide a superior experience—soft, absorbent, and made from sustainably sourced materials. We prioritize eco-friendliness, offering options made from biodegradable and recyclable materials to reduce environmental impact. Our product range includes facial tissues, hand towels, napkins, and bathroom tissues in various textures and sizes, all made to meet the highest standards of hygiene and durability. With Imbued, you ensure your guests and customers feel the comfort of luxury and the assurance of cleanliness in every use.



FACIAL TISSUES



- 100 / 150 / 200 SHEETS
- 30 BOXES

NYLON TISSUES



- 200/400/600 SHEETS
- 30 PACKETS

BOUTIQUE TISSUES



- 80 SHEETS
- 36 BOXES



COCKTAIL NAPKIN 2 PLY



| TYPE | PACKAGING |
|------|-----------|
|------|-----------|

| | |
|-------|-------|
| 23*23 | 50*40 |
|-------|-------|

| | |
|-------|-------|
| 33*33 | 50*40 |
|-------|-------|

| | |
|-------|-------|
| 40*40 | 50*40 |
|-------|-------|

AVAILABLE COLORS:
WHITE/BLACK/YELLOW/BROWN/RED

MAXI-ROLL



| TYPE | PACKAGING |
|------|-----------|
|------|-----------|

| | |
|-------------------------|-----------|
| 2 PLY (600/800/925 gms) | 1*6 ROLLS |
|-------------------------|-----------|

| | |
|---------------------------|-----------|
| AUTOCUT (800/925/950 gms) | 1*6 ROLLS |
|---------------------------|-----------|

| | |
|------------------------|------------|
| TORK (600/800/925 gms) | 1*12 ROLLS |
|------------------------|------------|

FOLDED NAPKIN



- 50 SHEETS
- 20 PACKETS



TOILET ROLLS



- 2 PLY / 3 PLY
- 200/250/300 SHEETS
- 10 ROLLS

WET WIPES



| TYPE | PACKAGING |
|------|-----------|
|------|-----------|

| | |
|-----------|---------------|
| SMALL 6*8 | 1000/2000 PCS |
|-----------|---------------|

| | |
|------------|---------------|
| LARGE 7*11 | 1000/2000 PCS |
|------------|---------------|

WOODEN & BAMBOO PRODUCTS

WOODEN CUTLERY



| TYPE | PACKAGING |
|------------------------------------------------------------------|-----------|
| WOODEN FORK 160MM | 100*50 |
| WOODEN SPOON 160MM | 100*50 |
| WOODEN KNIFE 160MM | 100*50 |
| WOODEN CUTLERY SET (WOODEN FORK,SPOON, KNIFE&BROWN NAPKIN) | 500 SETS |

WOODEN COFFEE STIRRER



- 14CM / 19CM
- 1000 PCS

UMBRELLA PICK



- 100 MM
- 144 PCS

BAMBOO SKEWER



| TYPE | PACKAGING |
|-----------|-------------|
| 6 " 3 mm | 100*100 PCS |
| 8 " 3 mm | 100*100 PCS |
| 10 " 3 mm | 100*100 PCS |
| 12 " 3 mm | 100*100 PCS |

BAMBOO KNOT SKEWER



- 10/12/15 CM
- 100*100 PCS

BAMBOO PADDLE SKEWER



| TYPE | PACKAGING |
|-------|-------------|
| 9 CM | 100*100 PCS |
| 12 CM | 100*100 PCS |
| 15 CM | 100*100 PCS |

BAMBOO TOOTH PICK



| TYPE | PACKAGING |
|---------------------------------|-----------|
| BAMBOO TOOTHPICKS | 400 PCS |
| BAMBOO TOOTHPICKS-1 SIDE-MINTED | 1000 PCS |
| BAMBOO TOOTHPICKS-2 SIDE-MINTED | 1000 PCS |

BAMBOO TWIN CHOPSTICK



- 230*4.5mm
- 3000 PAIRS



PLASTIC PRODUCTS



Imbued's plastic food containers are crafted to deliver superior durability, versatility, and freshness for all food storage needs, making them ideal for the hospitality industry, catering services, and everyday use. Each container is made from high-quality, BPA-free plastic, ensuring food safety while keeping meals fresh for longer. Designed for practical use, our containers are leak-proof and easy to stack, saving valuable storage space.

We offer a variety of shapes and sizes to suit different requirements, from small single-portion containers to large-capacity options. Whether used for hot or cold storage, Imbued plastic containers are microwave-safe, freezer-safe, and dishwasher-friendly, making them both convenient and reliable for fast-paced environments. By choosing Imbued, clients can count on dependable, quality storage solutions that uphold food safety and presentation standards.

BLACK BASE ROUND CONTAINER

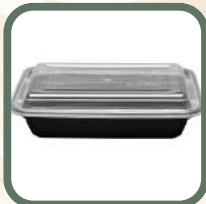


TYPE

PACKAGING

| | |
|-------------------|---------|
| BLACK BASE RO-16 | 150 PCS |
| BLACK BASE RO-24 | 150 PCS |
| BLACK BASE RO-25 | 150 PCS |
| BLACK BASE RO-32 | 150 PCS |
| BLACK BASE RO-40 | 150 PCS |
| BLACK BASE RO-48 | 150 PCS |
| BLACK BASE RO-348 | 150 PCS |

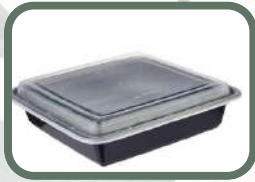
BLACK BASE RECTANGULAR CONTAINER



TYPE

PACKAGING

| | |
|------------------|---------|
| BLACK BASE RE-12 | 150 PCS |
| BLACK BASE RE-16 | 150 PCS |
| BLACK BASE RE-24 | 150 PCS |
| BLACK BASE RE-28 | 150 PCS |



TYPE

PACKAGING

| | |
|------------------|---------|
| BLACK BASE RE-32 | 150 PCS |
| BLACK BASE RE-38 | 150 PCS |
| BLACK BASE RE-48 | 150 PCS |
| BLACK BASE RE-58 | 150 PCS |
| BLACK BASE RE-58 | 150 PCS |
| BLACK BASE RE-58 | 150 PCS |

BLACK BASE CONTAINER



TYPE

PACKAGING

| | |
|--------------------------|---------|
| BLACK BASE 1 COMPARTMENT | 150 PCS |
| BLACK BASE 2 COMPARTMENT | 150 PCS |
| BLACK BASE 3 COMPARTMENT | 150 PCS |

RED & BLACK DELI CONTAINER



| TYPE | PACKAGING |
|---------|-----------|
| 650 ML | 300 PCS |
| 750 ML | 300 PCS |
| 1000 ML | 300 PCS |

WHITE PLASTIC CONTAINER



| TYPE | PACKAGING |
|--------|-----------|
| 75 CC | 1500 PCS |
| 100 CC | 1500 PCS |
| 200 CC | 1500 PCS |
| 225 CC | 1000 PCS |
| 250 CC | 1000 PCS |
| 400 CC | 1000 PCS |
| 500 CC | 1000 PCS |

CLEAR RECTANGULAR CONTAINER



| TYPE | PACKAGING |
|-------|-----------|
| 8 OZ | 250 PCS |
| 12 OZ | 250 PCS |
| 16 OZ | 250 PCS |
| 24 OZ | 250 PCS |
| 32 OZ | 250 PCS |
| 48 OZ | 250 PCS |
| 64 OZ | 250 PCS |

ROUND PLASTIC CONTAINER



| TYPE | PACKAGING |
|--------|-----------|
| 225 CC | 500 PCS |
| 250 CC | 500 PCS |
| 450 CC | 500 PCS |
| 525 CC | 500 PCS |

RECTANGULAR CLEAR CONTAINER



| TYPE | PACKAGING |
|--------|-----------|
| P-500 | 500 PCS |
| P-650 | 500 PCS |
| P-750 | 500 PCS |
| P-1000 | 500 PCS |

PLASTIC PET BOTTLES



| TYPE | PACKAGING |
|---------|-----------|
| 250 ML | 250 PCS |
| 500 ML | 250 PCS |
| 1000 ML | 250 PCS |
| 1500 ML | 250 PCS |



PORTION CUP / SOUFFLE CUP



| TYPE | PACKAGING |
|---------|-----------|
| 01 OZ | 2000 PCS |
| 02 OZ | 2000 PCS |
| 2.5 OZ | 2500 PCS |
| 3.25 OZ | 2000 PCS |
| 04 OZ | 2000 PCS |

CLEAR PET CUP / LID (FLAT or DOME)



| TYPE | PACKAGING |
|-------------------------------|-----------|
| 08 OZ | 1000 PCS |
| 10 OZ | 1000 PCS |
| 12 OZ | 1000 PCS |
| 14 OZ | 1000 PCS |
| 16 OZ | 1000 PCS |
| LIDS - DOME / FLAT : 1000 PCS | |

BLACK BASE CAKE CONTAINER



| TYPE | PACKAGING |
|---------------------|-----------|
| 7 " CAKE CONTAINER | 100 PCS |
| 10 " CAKE CONTAINER | 80 PCS |

CUTLERY



| TYPE | PACKAGING |
|-------------------|-----------|
| BLACK CUTLERY SET | 2000 PCS |
| WHITE CUTLERY SET | 2000 PCS |
| CLEAR CUTLERY SET | 2000 PCS |

FOAM CUP / LID



AVAILABLE SIZES

06, 08, 10, 12, 14, 16 OZ

PACKAGING

1000 PCS

FOAM PLATES / BOXES



| TYPE | PACKAGING |
|----------------------|-----------|
| FOAM PLATE 7" | 500 PCS |
| FOAM PLATE 9" | 500 PCS |
| FOAM PLATE 10" | 500 PCS |
| FOAM PLATE 3 SECTION | 500 PCS |
| BURGER BOX | 500 PCS |
| HOTDOG BOX | 500 PCS |

FOAM TRAYS



| TYPE | PACKAGING |
|---------------------|-----------|
| FOAM TRAY MINI (CT) | 500 PCS |
| FOAM TRAY S1 | 500 PCS |
| FOAM TRAY M2 | 500 PCS |
| FOAM TRAY PT-1 | 500 PCS |
| FOAM TRAY M-3 | 500 PCS |
| FOAM TRAY M-13 | 500 PCS |
| FOAM TRAY M-14 | 250 PCS |
| FOAM TRAY D-18 | 250 PCS |
| FOAM TRAY JUMBO | 100 PCS |

ALUMINIUM FOIL



| TYPE | PACKAGING |
|--------|-----------|
| 2.5 KG | 1*6 ROLLS |

CLING FILM



| TYPE | PACKAGING |
|-------|-----------|
| 45 CM | 1*6 ROLLS |

ZIPPER BAG



| TYPE | PACKAGING |
|------|-----------|
|------|-----------|

CLEANING PRODUCTS



WIPE CLOTH



| TYPE | PACKAGING |
|----------------------|-----------|
| MICRO FIBRE CLOTH | 1*10 PCS |
| YELLOW DUSTER | 1*10 PCS |
| KITCHEN TOWEL | 1*10 PCS |
| FLOOR CLOTH | 1*10 PCS |
| GLASS CLOTH | 1*10 PCS |
| MULTI-PURPOSE SPONGE | 1*10 PCS |
| SPONGE CLOTH | 1*10 PCS |
| GREEN SCOURING PAD | 1*10 PCS |
| STEEL WOOL | 1*10 PCS |

WIPERS



| ITEM | TYPE |
|-----------------------------|-------------------|
| FLOOR WIPER W/ STICK(CHINA) | 35, 45 CM |
| FLOOR WIPER W/ STICK(ITALY) | 33, 44, 55 CM |
| GLASS WIPER METAL | 25, 30, 35, 40 CM |
| GLASS APPLICATOR | 35 CM |
| HAND WIPER | 15 CM |
| HAND DUST PAN WITH BRUSH | |



| |
|-------------------------------------------|
| AUTOCLOSE LONG DUSTPAN WITH BRUSH (ITALY) |
| AUTOCLOSE LONG DUSTPAN WITH WHEEL & BRUSH |



LONG DUST PAN WITH BRUSH
TOILET BRUSH (ITALY)
SOFT BROOM WITH STICK (CHINA)
SOFT BROOM WITH STICK (ITALY)
WOODEN STICK 120 CM



SCRUBBING BRUSH WITH STICK
IRON BRUSH
CLOTH BRUSH
BOTTLE BRUSH
HAND BRUSH SOFT



KENTUCKY MOP FULL SET
KENTUCKY MOP ALUMINIUM STICK
KENTUCKY MOP CLIP
KENTUCKY MOP REFILL



LOBBY MOP SET 40, 60, 80 CM
LOBBY MOP FRAME 60, 80 CM
LOBBY MOP REFILL 60, 80 CM



SINGLE BUCKET MOP
TROLLEY 25L, 32L
DOUBLE BUCKET MOP
TROLLEY 30L
SERVICE CART



DUST BIN WITH PEDAL
30, 45, 60L
DUST BIN WITH PEDAL HD
100, 120, 140L



PUSH TYPE DUST BIN 20, 40, 58L

OFFICE NET DUSTBIN SILVER
9, 13, 18L

OFFICE NET DUSTBIN BLACK
9, 13, 18L



FEATHER DUSTER 23", 24", 27"

SUCTION PUMP

SPRAY BOTTLE 500ML



WET FLOOR CAUTION
BOARD

SCRUBBING PAD 17", 20"

PERSONAL PROTECTION ITEMS



| TYPE | PACKAGING |
|-------------------------------------|-----------|
| HAIRNET (BLUE,WHITE, BLACK) | 1000 PCS |
| FACEMASK | 50 PCS |
| SHOE COVER | 2000 PCS |
| PE HAND SLEEVE (WHITE, BLUE, CLEAR) | 2000 PCS |
| BEARD MASK WHITE | 1000 PCS |



| TYPE | PACKAGING |
|---------------------------------------|-----------|
| VINYL GLOVES (POWDERED / POWDER FREE) | 1000 PCS |
| NITRILE GLOVES | 1000 PCS |
| PE GLOVES CLEAR | 10000 PCS |



| TYPE | PACKAGING |
|--------------------------|-----------|
| DISPOSABLE APRON | 10000 PCS |
| CHEF HAT NON-WOVEN | 100 PCS |
| PAPER FORAGE HAT | 1000 PCS |
| HEAVY DUTY RUBBER GLOVES | 12 PAIRS |

MISCELLANEOUS ITEMS



BBQ CHARCOAL 1*10 KG
CHARCOAL LIGHTER FLUID



| TYPE | PACKAGING |
|--------------|-----------|
| CHAFING FUEL | 24 PCS |
| CHAFING GEL | 72 PCS |



Expanding Horizons: New Categories Launching Soon



SAFETY

A comprehensive range of safety personal protective equipment (PPE) tailored to ensure workplace safety across industries. Imbued Safety features durable, reliable, and ergonomically designed safety gear, including helmets, gloves, eyewear, footwear, and more. Committed to innovation and compliance with safety standards, Imbued Safety aims to protect and empower workers in all environments.



WEAR

A dedicated line of high-quality, comfortable, and stylish uniforms designed for hospitality, corporate, and industrial use. Imbued Wear combines practicality with modern aesthetics, offering customizable solutions to suit diverse client needs. The collection emphasizes durability, professional appeal, and eco-friendly materials, ensuring both style and sustainability.

IMBUED GENERAL TRADING LLC



Building No: 10,
Al Quoz - 4,
Dubai. UAE.
P.O. Box: 390521



+971-503016420 , +971-42244407



info@imbuedtrading.com



/imbued-general-trading-llc



/imbuedtradingllc



/imbued-trading



/imbued.tradingllc